

The logo for KEYA, featuring the word "KEYA" in a stylized, white, sans-serif font. The letters are interconnected, with the 'K' and 'E' sharing a vertical stroke, and the 'Y' and 'A' sharing a vertical stroke. A registered trademark symbol (®) is located at the top right of the 'A'.

UNLOCK INNOVATION

A series of thin, white, curved lines that sweep across the page from the bottom left towards the top right, creating a sense of motion and depth. The lines are more densely packed in some areas, creating a mesh-like effect.

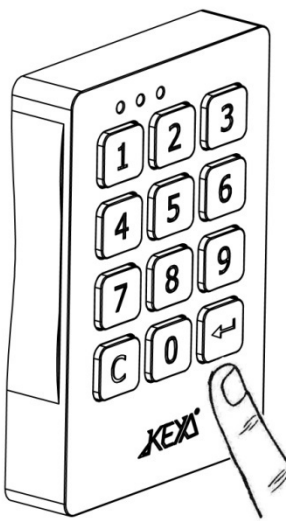
TRONIC PLUS





## Multiuser mode

**1**



**To close:**

\* \* \* \* ←

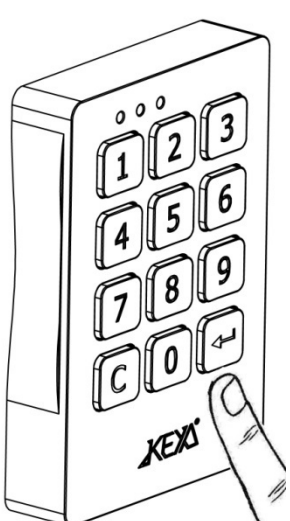
**To open:**

\* \* \* \* ←

Open and close by 4-digit code. The code is erased every time the lock is opened, being available for a new use.

## Single User mode

**2**



**To open:**

\* \* \* \* ←

**To close:**

The latch closes automatically after 2 seconds.  
Note: the lock is provided with a metal latch holder that allows to close the door just by pushing it. (slam door system)

Open and close by 4-digit code. The code is set for 1 user only.

### Change the User code

**3**

press during 3 seconds

CURRENT code

NEW code

Press Enter during 3 seconds.  
 Introduce Current code and press Enter.  
 Introduce New code and press Enter.

### Open using Master cod: Inspection mode / Delete last User code

**4**

To open:

MASTER code

-30s INSPECTION MODE	+30s USER ERASED
----------------------------	------------------------

**INSPECTION MODE**  
 Introduce the 5 digit Master code and press Enter  
 Close the lock by pressing Enter before 30s.  
 The User code is not deleted.

**DELETE USER CODE**  
 Introduce Master code and press Enter.  
 After 30s the lock remains opened.  
 The user code has been deleted and a new User code will be required to close the lock again.

### Change the Master code

**5**

press during 3 seconds

← \* \* \* \* \*

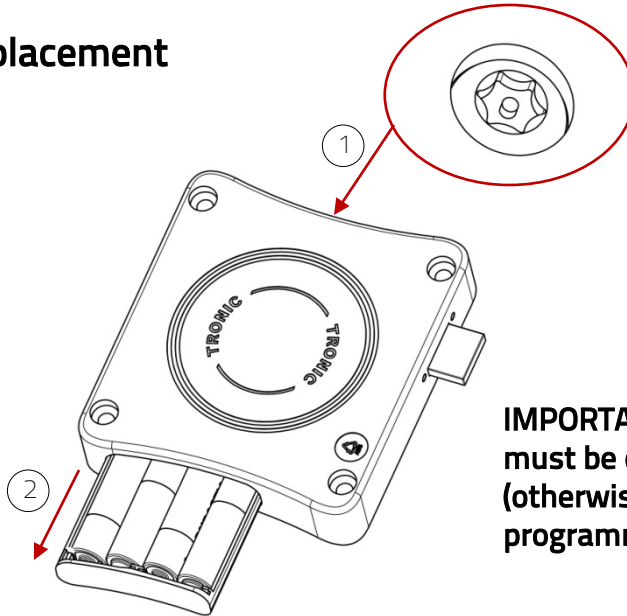
CURRENT master code

\* \* \* \* \*

NEW master code

Press Enter during 3 seconds.  
Introduce Current master code and press Enter.  
Introduce New master code and press Enter.

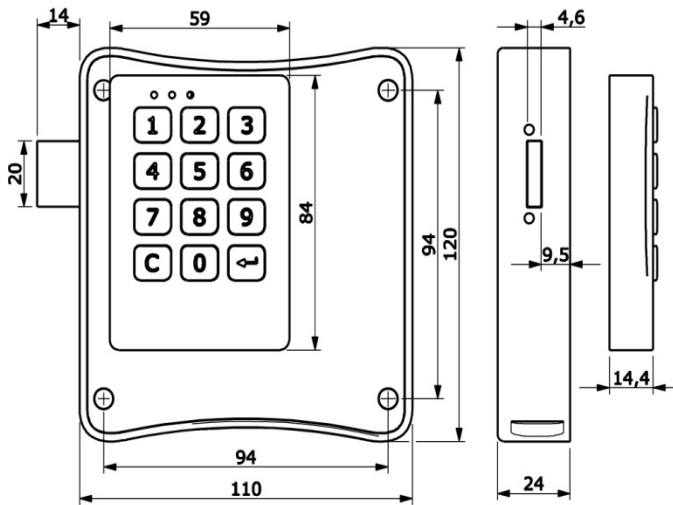
### Batteries replacement



Torx T20

**IMPORTANT:** The batteries replacement must be done in less than 5 minutes (otherwise the clock will lose the programmed time)

### Measurements



### Technical specifications

Salt spray test	> 96h
Working temperature	-5 ° C <> +70 ° C
Latch force	> 45Kgf
UV Rays	> 10000h
Vibration	10 - 200 Hz 2g
Life test	> 200000 cycles
Electrostatic discharge	8000 V
Battery life	> 30000 cycles



RoHS



Management System  
ISO 9001:2008

www.tuv.com  
ID: 9105066651

