

The logo for KEYA, featuring the word "KEYA" in a stylized, white, geometric font. The letters are interconnected, with the 'K' and 'E' sharing a vertical stroke, and the 'Y' and 'A' sharing a vertical stroke. A registered trademark symbol (®) is located at the top right of the 'A'.

UNLOCK INNOVATION

The background is a solid blue gradient. On the right side, a series of thin, white, curved lines radiate from the top right towards the center, creating a sense of motion and depth. At the bottom, a series of thin, white, wavy lines curve across the width of the page, creating a sense of flow and movement.

TRONIC CARD



1

To close:

Insert the card into the slot of the lock.
Close de door.
Introduce a 4 digits code + Enter

* * * * ↩

2

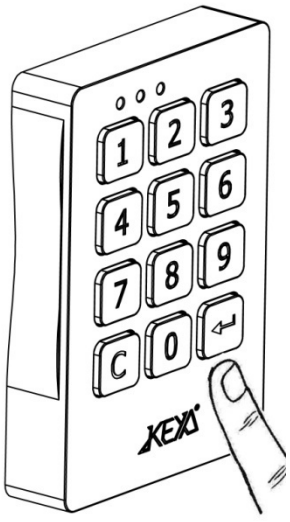
To open:

Enter the code used to close + Enter
Open the door.
Remove the card.

* * * * ↩

Close and open

1



To close:

* * * * ↵

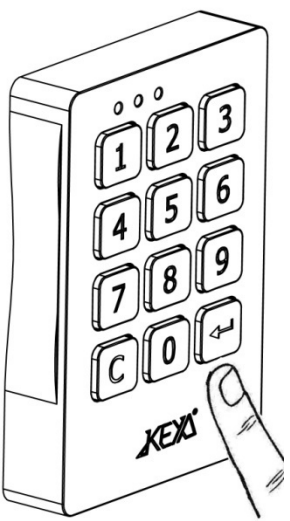
To open:

* * * * ↵

Open and close by 4-digit code. The code is erased every time the lock is opened, being available for a new use.

Open using Master code: Inspection mode / Delete User code

2



To open:

* * * * * ↵

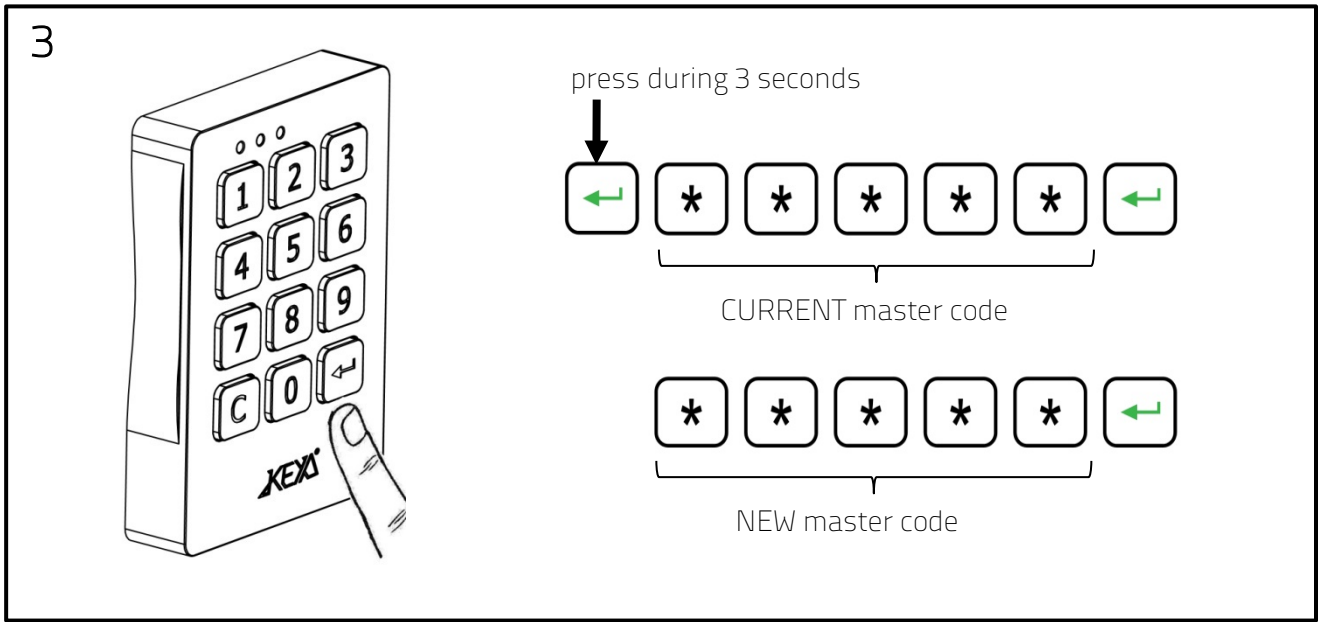
MASTER code

-30s INSPECTION MODE	+30s USER ERASED
----------------------------	------------------------

INSPECTION MODE
Introduce the 5 digit Master code and press Enter
Close the lock by pressing Enter before 30s.
The User code is not deleted.

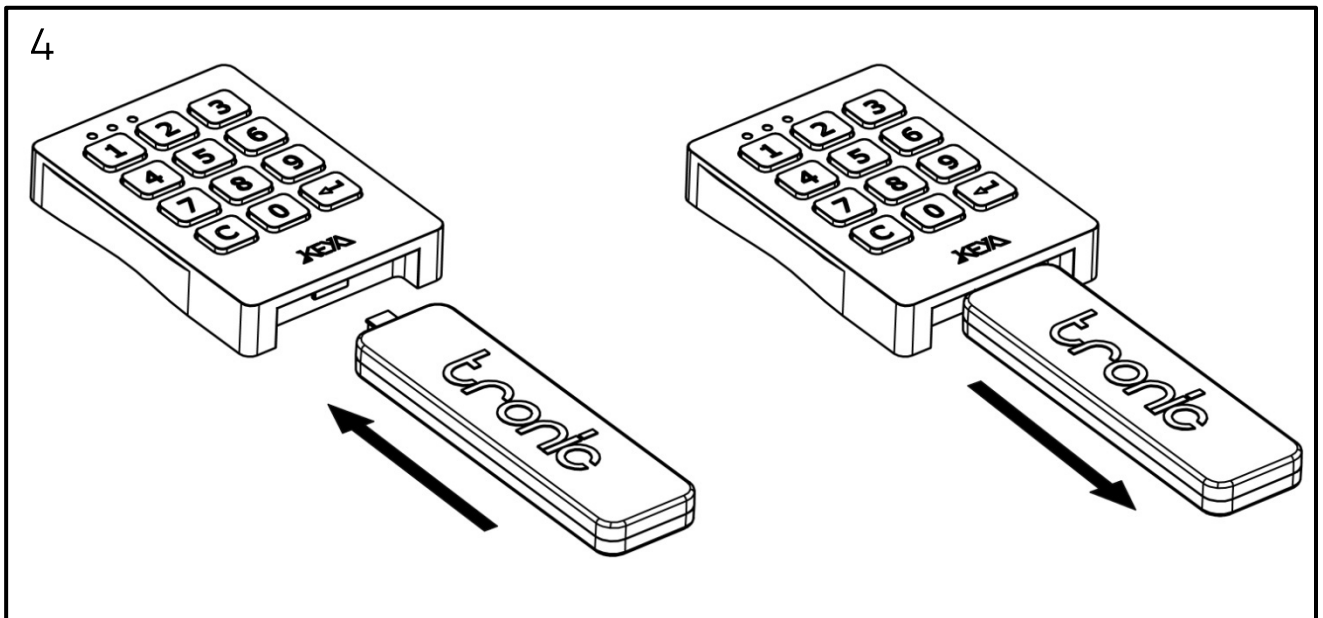
DELETE USER CODE
Introduce Master code and press Enter.
After 30s the lock remains opened.
The user code has been deleted and a new User code will be required to close the lock again.

Change the Master code



Press Enter during 3 seconds.
 Introduce Current master code and press Enter.
 Introduce New master code and press Enter.

Open using electronic Master key: Inspection mode/ Delete User code



INSPECTION MODE

Connect the Master key (BLUE)
 Lock opens
 Remove electronic key
 Press enter before 30 seconds
 User code is not deleted.

DELETE USER CODE

Connect the Master key (BLUE)
 Lock opens
 Remove electronic key
 After 30 seconds the User code will be deleted.
 A new User code will be required to close the lock again.

Programmable settings (management software and cable required)

AUTOMATIC OPENING TIME:

The lock will open automatically at the programmed time:

- hh : mm
- Mon, Tue, Wed, Thu, Fri, Sat, Sun
- Working days
- Two options: Leave door open
Close door again

ACOUSTIC SIGNAL VOLUME:

- High / Low / Off

LED INDICATION OF CLOSED POSITION:

- On / Off blinking red LED when locker is closed

CODES:

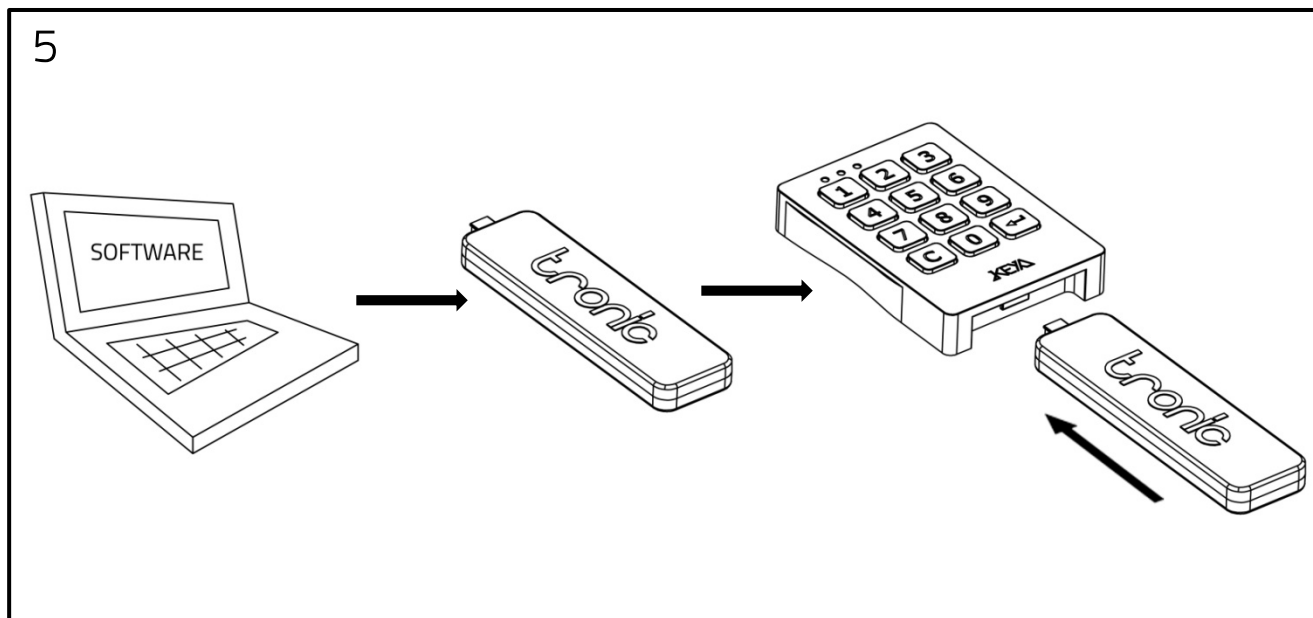
- User / Master

LAST EVENTS

BATTERY LEVEL

N° OF OPERATIONS

Settings key

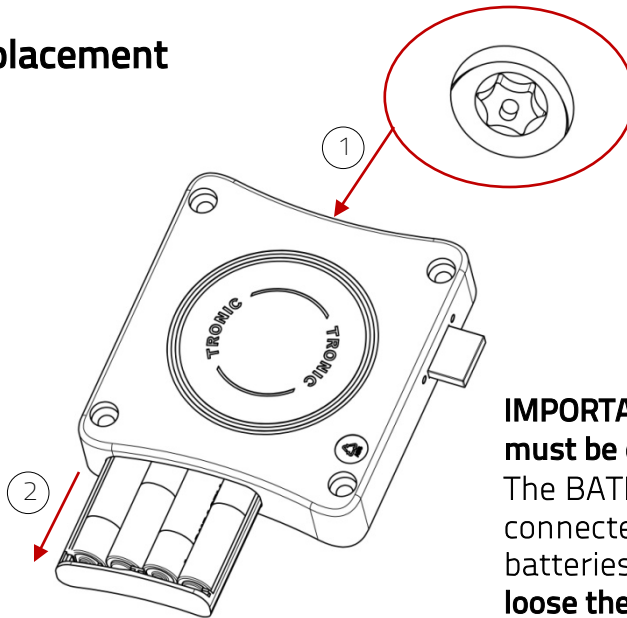


Load settings from the computer to the settings key (BLACK)

Connect settings key to the lock.

The settings will be automatically transferred to the lock.

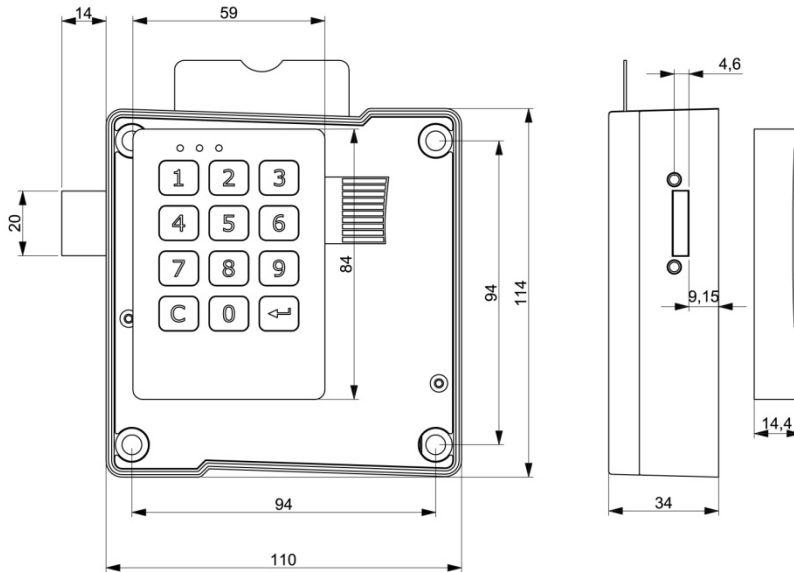
Batteries replacement



Thor T20

IMPORTANT: The batteries replacement must be done in less than 5 minutes. The BATPACK must remain connected during the release of the batteries (**otherwise the clock will loose the programmed time**).

Measurements



Technical specifications

Salt spray test	> 96h
Working temperature	-5° C < > +70° C
Latch force	> 45Kgf
UV Rays	> 10000h
Vibration	10 - 200 Hz 2g
Life test	> 200000 cycles
Electrostatic discharge	8000 V
Battery life	> 70000 cycles



RoHS



Management System
ISO 9001:2008

www.tuv.com
ID: 910566651

